

The Haven, 1, Drapers Court, Claremont Hill, Shrewsbury, SY1 1RQ
£695 Per Month



The Haven, 1, Drapers Court, Claremont Hill, Shrewsbury, SY1 1RQ

£695 Per Month

VIRTUAL TOUR AVAILABLE - Beautifully presented one bedroom cottage nestled in a most attractive cobbled courtyard just off Claremont Hill in the heart of Shrewsbury town centre and a stone's throw from Quarry Park.

*Garage available very close by on a separate licence for an additional £150 per month if required.

Available: 10/05/25

Description

Comprising: Living room with bay window, modern kitchen including white goods, stairs to first floor, double bedroom with attractive exposed beams, shower room with airing cupboard. Gas central heating. EPC D

*Garage available very close by on a separate licence for an additional £150 per month if required.



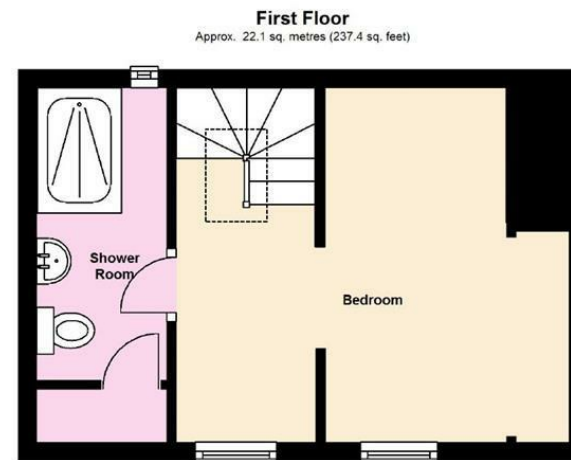
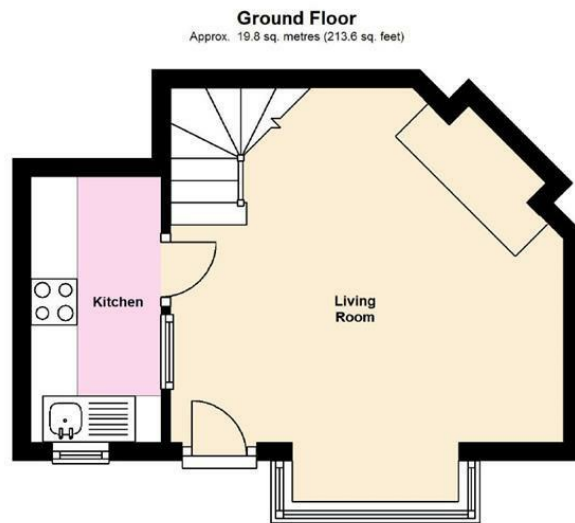
Unfurnished

Council Tax Band: B

Available: 10th May 2025

EPC: D

Floor Plans



Total area: approx. 41.9 sq. metres (451.0 sq. feet)

We accept no responsibility for any mistake or inaccuracy contained within the floorplan. The floorplan is provided as a guide only and should be taken as an illustration only. The measurements, contents and positioning are approximations only and provided as a guidance tool and not an exact replication of the property.
Plan produced using PlanUp.

These particulars, whilst believed to be accurate are set out as a general outline only for guidance and do not constitute any part of an offer or contract. Intending purchasers should not rely on them as statements of representation of fact, but must satisfy themselves by inspection or otherwise as to their accuracy. No person in this firm's employment has the authority to make or give any representation or warranty in respect of the property.